

FIAT *Elevenhundred*



the car for every use = Ordinary - Family - Fast Touring



FIAT

Elevenhundred

The "1100", in its latest edition, indeed renews and emphasizes the "quality" of the greatest Fiat tradition; it is a byword of success in Italy and abroad. The mechanical components and the bodywork incorporate the latest technical advances and are built according to the most up to date manufacturing technique. It is a car of immense versatility by reason of its mechanical efficiency, its comfort and its economy.

The "new 1100" is presented in two models:

Mod. A - bucket seats, uni-colour presentation, metal fittings not chromium plated.

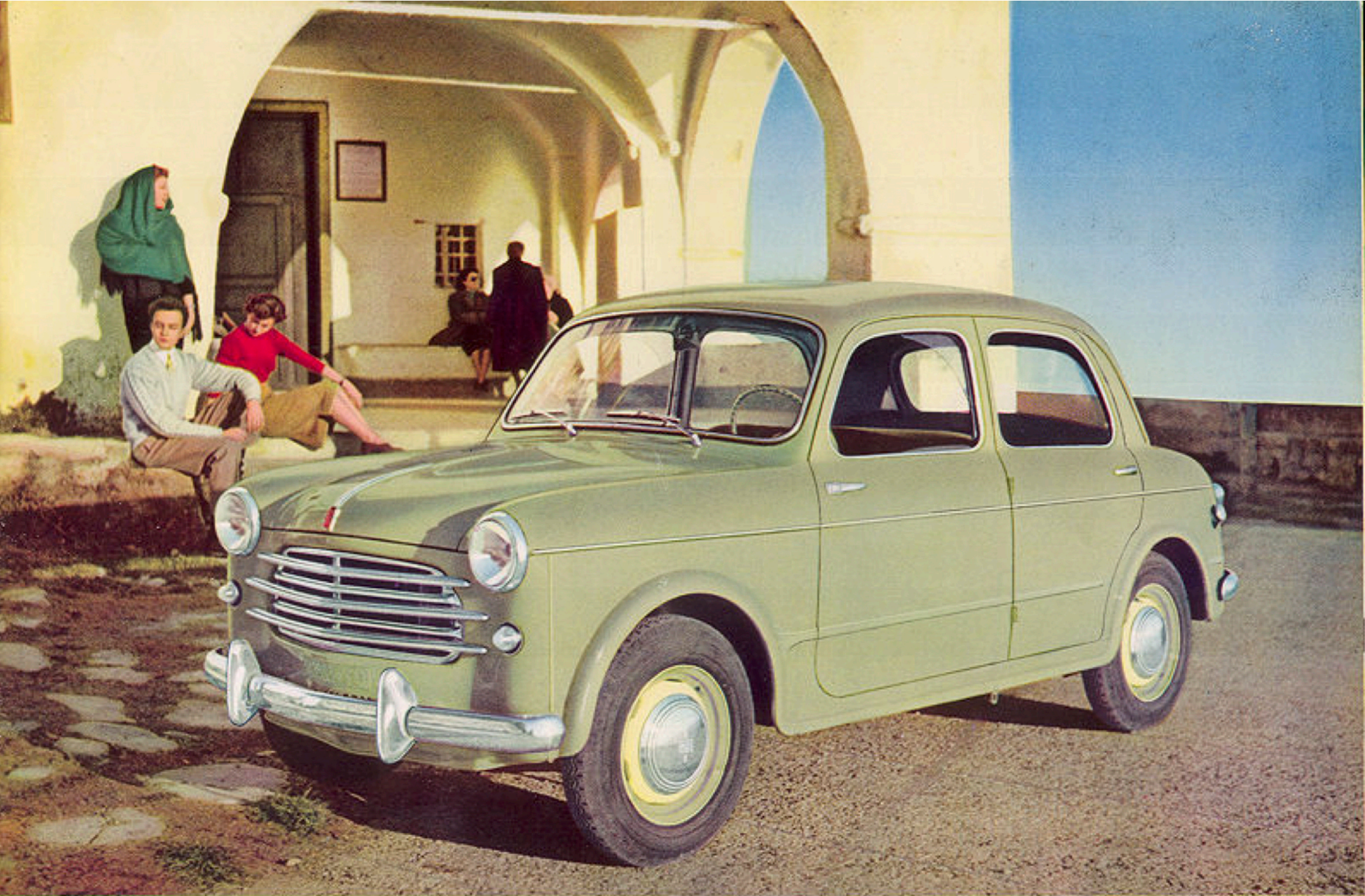
Mod. B - (as described in this catalogue) bench seat, wide choice of bodywork colours and upholstery, high quality finish, heating and aeration equipment.

Wireless and white wall tyres available at extra charge.

Other models available:

"1100 family" (station wagon)

"1100 TV" (fast touring)



the "new 1100" (style B saloon)

Speed over 71 miles (115 km) p. h.



Wide windscreen and easily readable instrument panel.



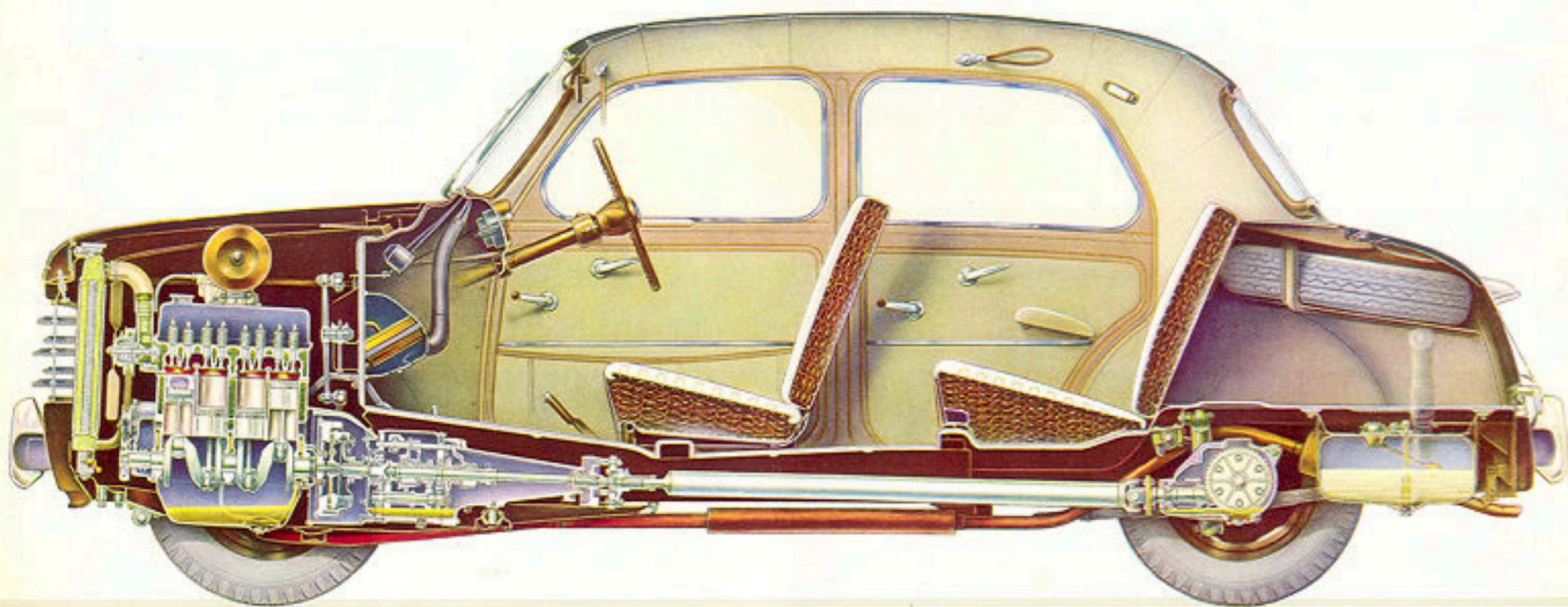
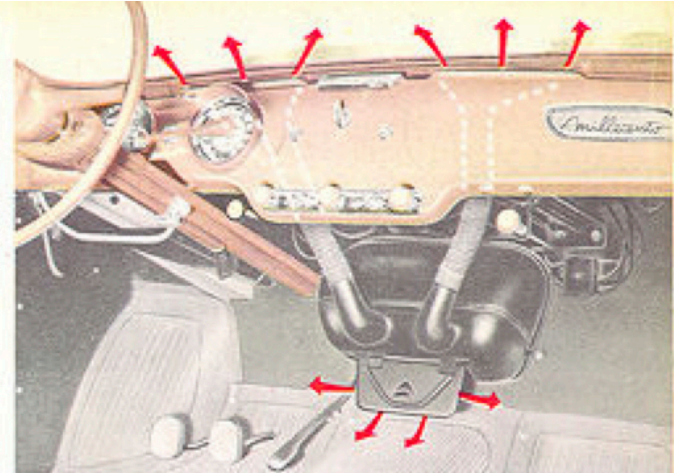
Room for plenty of luggage.



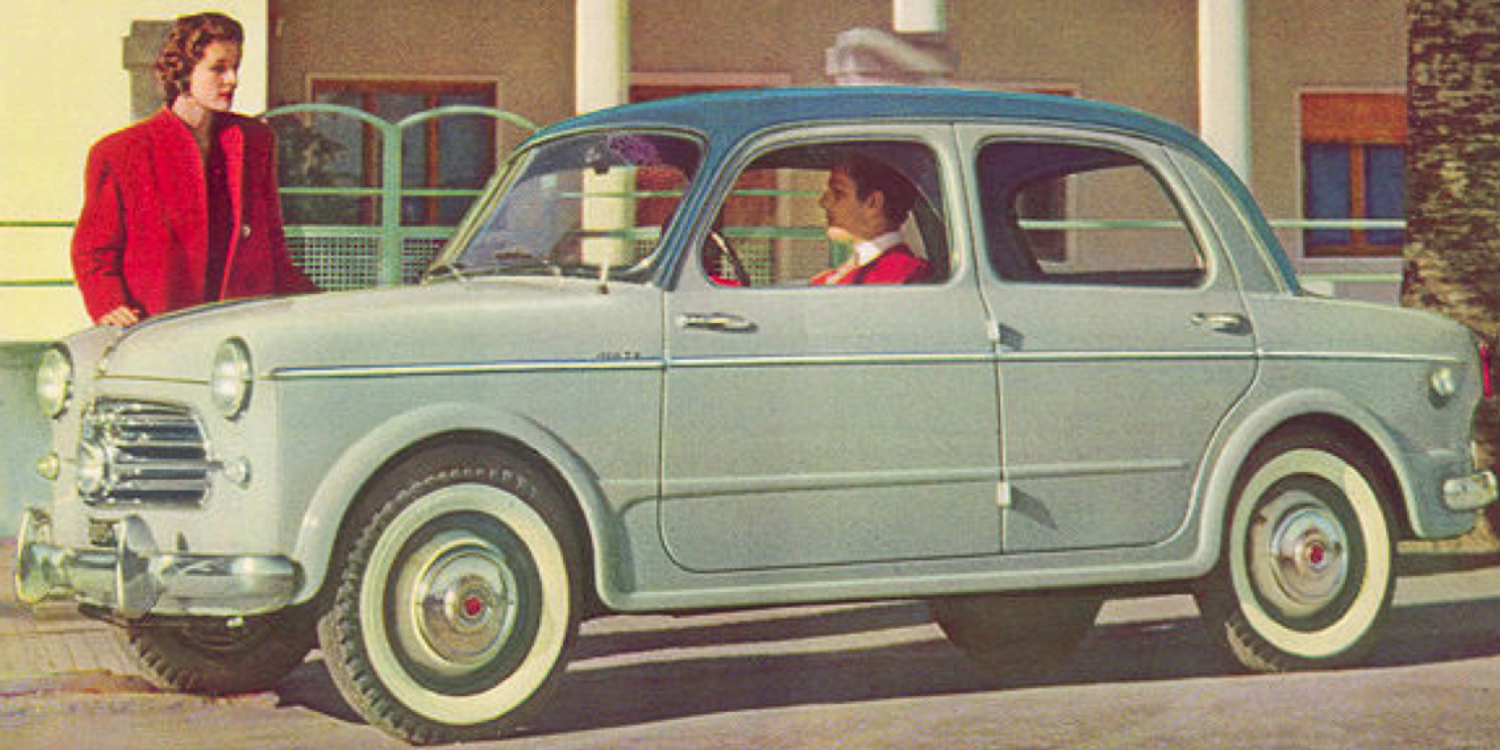
4 comfortable seats, well slung between the two axles and of easy access.

of the "new 1100"

The "new 1100" is perfectly heated in winter and well ventilated in summer. The warm air sprayed on the windscreen keeps the glass clear in cold weather. There is an electric fan which takes over when the car is travelling at low speed.



the "1100

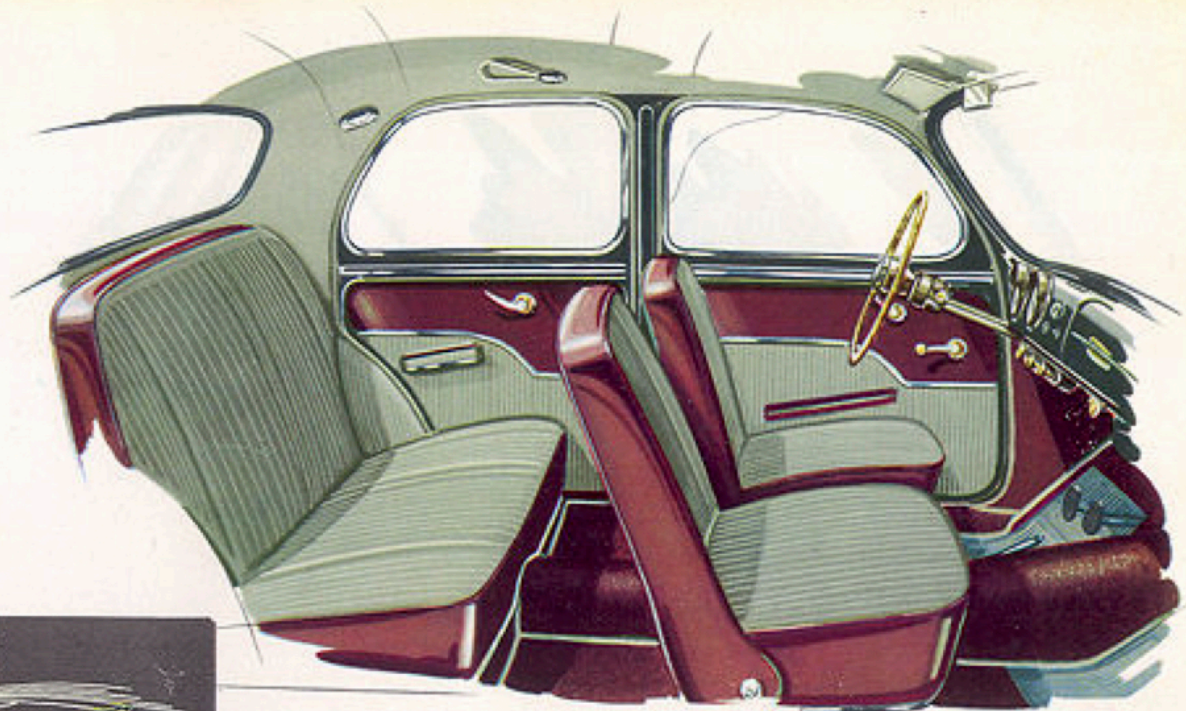


TV'' (fast tourer)

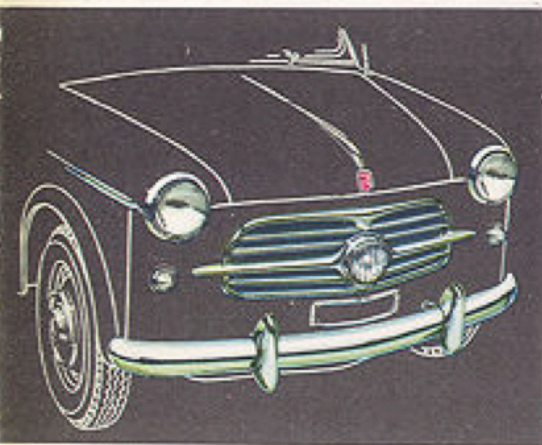
TURISMO
VELOCE

Speed over 83 miles (135 km) p. h.

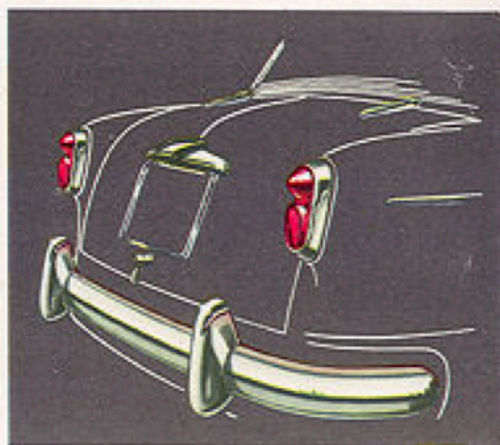
The great success of the "new 1100" in Italy and abroad has induced Fiat to bring out this special version of the car - the "1100 TV" (Turismo Veloce = Fast Tourer) - to satisfy those motorists who demand particularly brilliant performance and a luxurious finish in a car of restricted cylinder volume.



4 roomy seats; bench seat in front or two separate seats with adjustable, fold-down backrests.



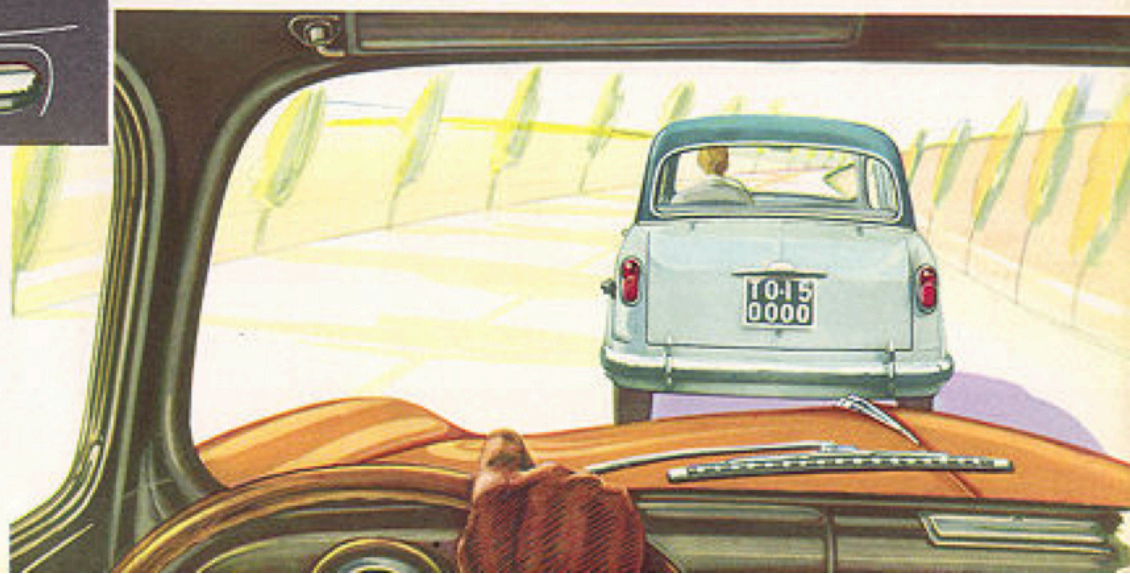
Radiator grille with built-in fog lamp.



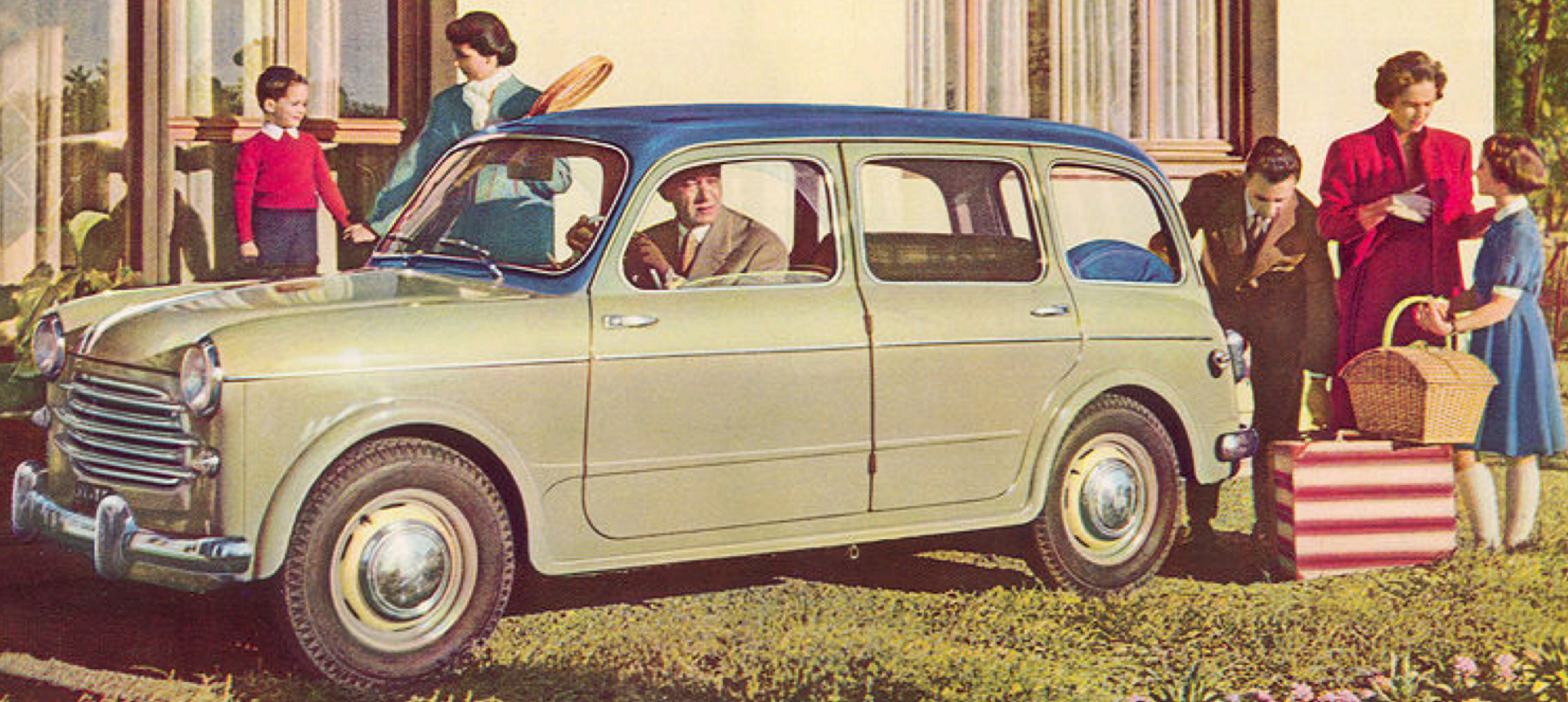
Projecting rear wings.

The "1100 TV" has a 50 h.p. engine enabling it to attain speeds of over 135 Km. (85 miles) per hour, while the body adds special elegance to the comfort of the standard model. This car is suitable for fast touring and is well able to satisfy the most exacting requirements of the fastidious motorist.

The "1100 TV" body is well lighted, thus affording full visibility.



the '66



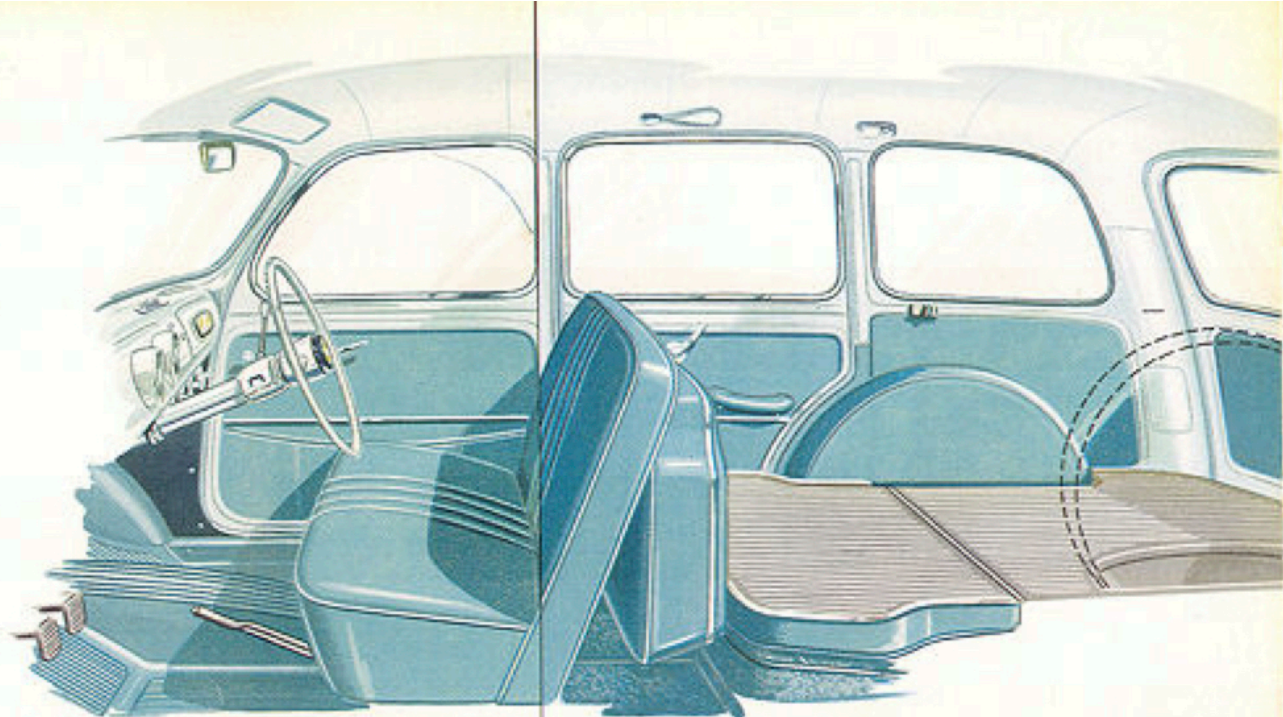
family 1100"

Speed 71 miles (115 km) p. h.

The "family" version is, as a car, basically the "1100", but with a body which makes it a dual-purpose car. In fact, by folding down the rear seat a floor for the carriage of luggage or light goods is formed behind the front seat backrest; this platform has an area of about 16 sq. feet.

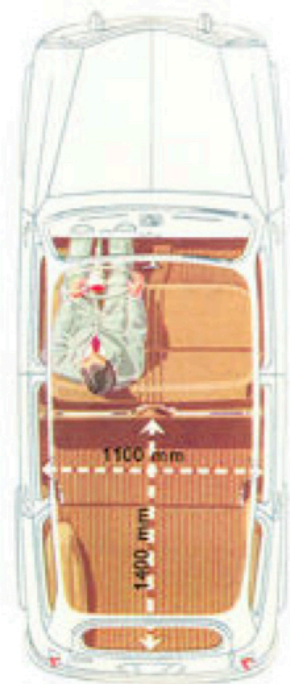
This is a most practical car for the family with young children and also for those who need to carry various things. Even a family might need to do this, as well as the merchant, the shopkeeper, the country motorist and the sportsman. There is plenty of room for guns, fishing tackle, skis or camping equipment.

The "family 1100" increases the field of usefulness of the "1100"



The rear door gives easy access to the goods platform and the spare wheel.

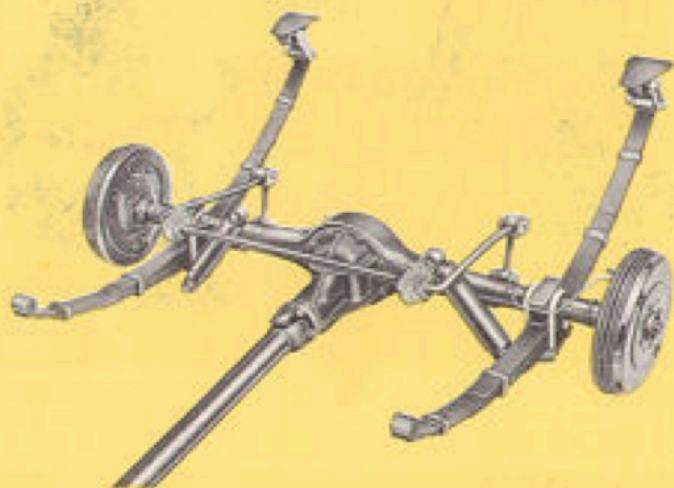
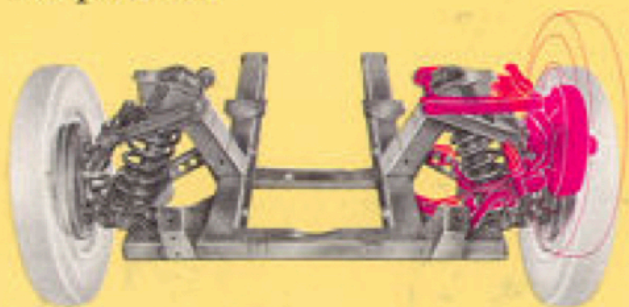




The "family 1100" is a dual-purpose vehicle with all the mechanical qualities, efficiency and low fuel consumption of the "new 1100".

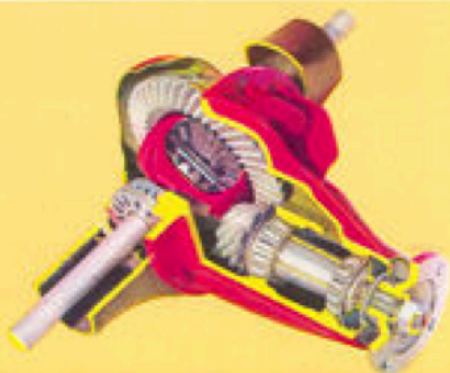


suspension



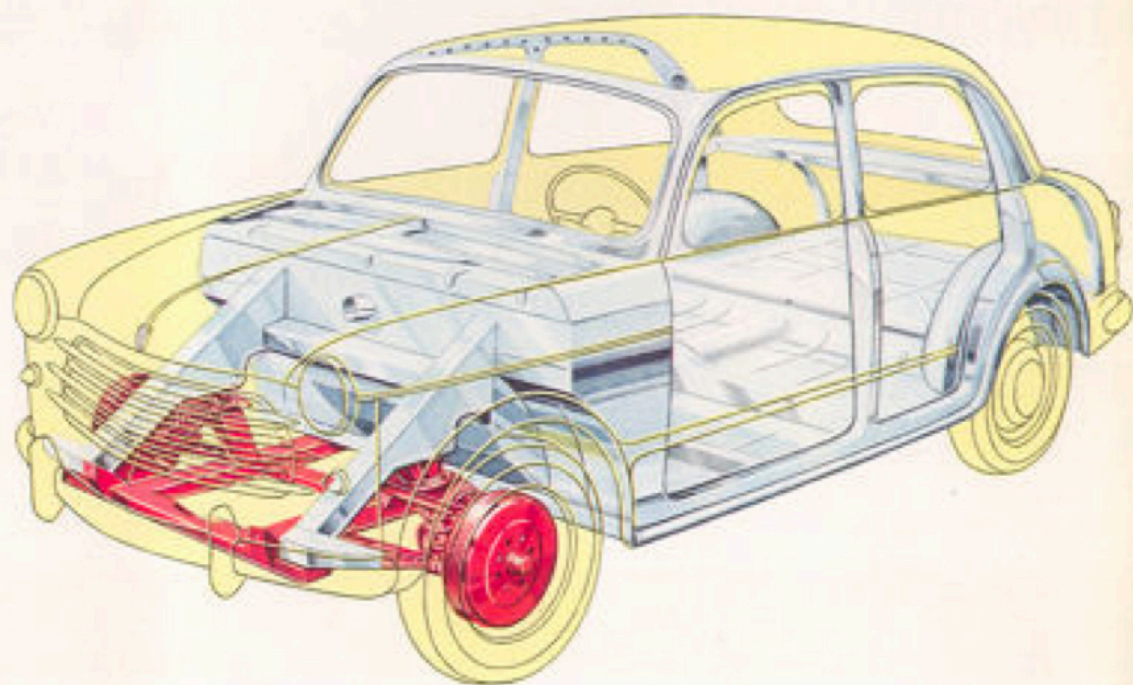
Excellent road holding and suspension.
Independently sprung front wheels; rear suspension
by flat leaf springs. Anti-roll bars front and back.

hypoid
gears

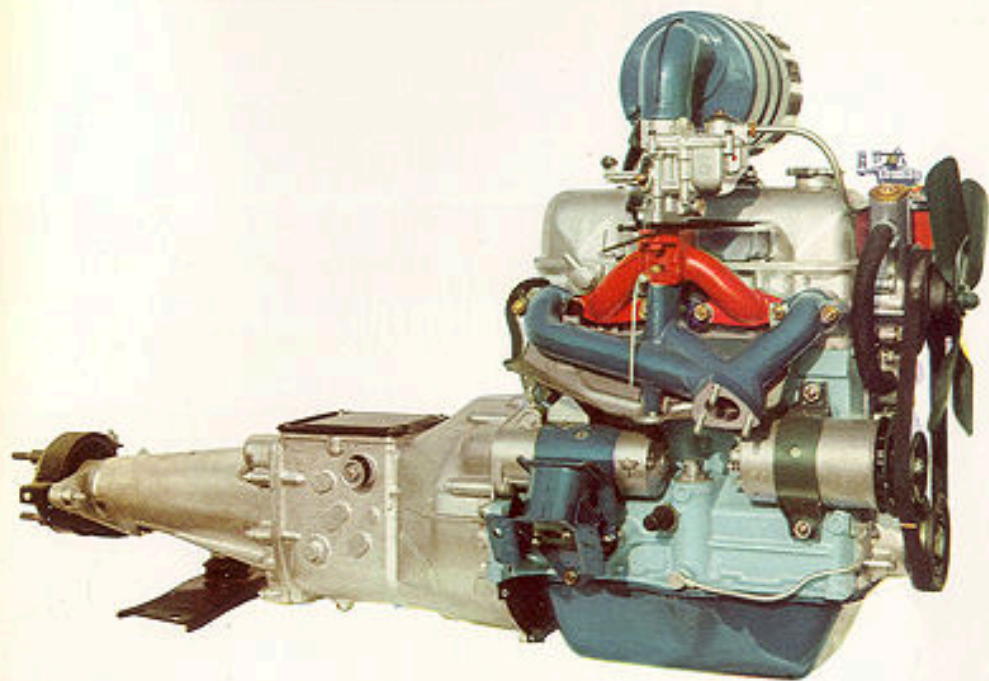


the structure

of the *Elevenhundred*

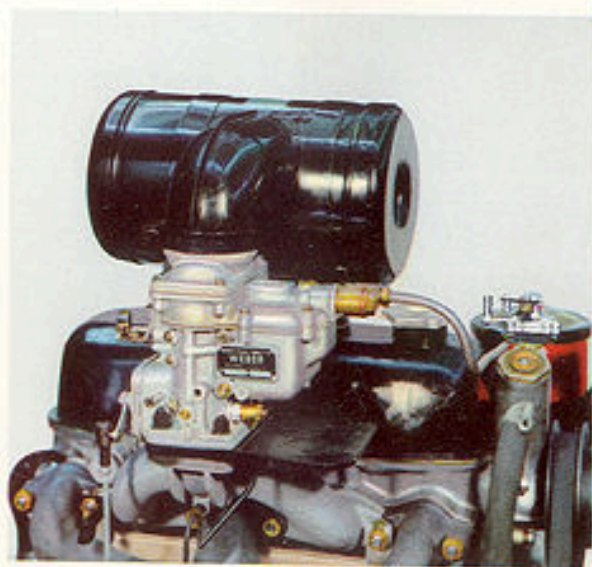
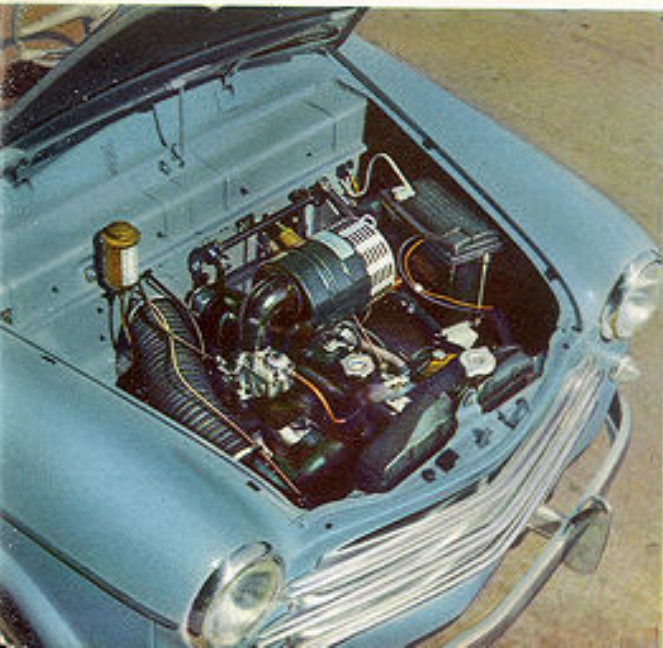
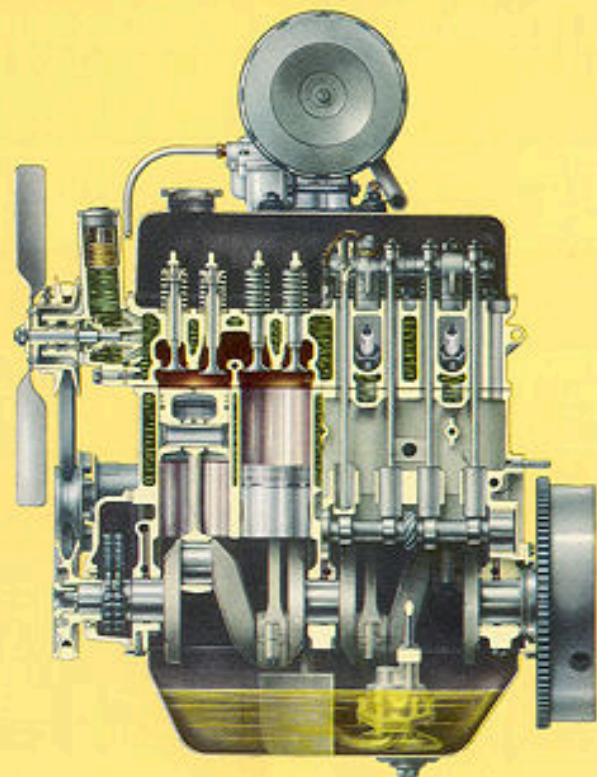


integral
body



Easy accessibility.

engine



The "1100 TV" has a twin-body carburettor.



Counterbalanced crankshaft.

technical specification

Engine: 4 cylinders, 1089 cc. Bore 68 mm., stroke 75 mm. Compression ratio 6.7. Maximum power at 4400 r.p.m. 36 h.p. Cast iron cylinder block. Aluminium head with inserted valve seats. Three-bearing, counterbalanced crankshaft. Overhead valves. Downdraught carburettor with starter, air intake with felt filter and silencer. Fuel feed by pump. Forced lubrication with gear pump, branched-off oil filter. Cooling water circulated by centrifugal pump and thermostat regulated. Battery ignition. - Electric starting motor. - Power plant (engine-clutch-gear box) mounted on composite (springs and rubber) blocks.

Clutch: single plate, dry, mounted on flexible hub.

Gear box: 4 speeds and reverse. Constant mesh second and third gears, free ring synchronisers on second, third and fourth speeds. Aluminium gear box. Gear lever situated under steering wheel.

Transmission shaft, hollow with joints at the ends.

Rear axle casing of stamped sheet steel, with hypoid pinion and crown wheel, ratio 10/43. Cast iron gear bracket.

Front suspension with swinging radius arms, helical springs and hydraulic telescopic double acting shock absorbers. Stabilising bar.

Rear suspension by flat leaf springs, with hydraulic telescopic double acting shock absorbers and stabilising bar.

Steering by worm and roller with independent symmetrical steering rods for each wheel, central tie rod operated by the steering wheel.

Hydraulic brakes on all four wheels, emergency hand brake on the transmission, operated by lever under front seat.


Petrol tank at rear, under floor; capacity 40 litres ($8\frac{3}{4}$ Imp. galls).

Disc wheels with $3\frac{1}{2}$ J rims and 5.20-14 tyres. The spare wheel is carried in the luggage boot.

Integral construction. Wheelbase 2.34 m. (7' 8"). Front track 1.23 m. (4' 0"), rear track 1.21 m. (3' 11.3/4").

Electrical equipment: 12 volts. 180 Watt dynamo with separate regulating unit. 28 amp/h. battery. Three-filament headlamps. Rear parking, direction indicating and stop lights, prism reflector. Front direction indicating lights. Number plate light illuminating also luggage boot. Electric horn. Parking lights, headlights and dimmer operated from under steering wheel. Interior lights. Intermittent flash direction indicator lights operated from below steering wheel, with automatic cut-out when steering wheel returns to straight ahead position. Parking lamp also lights under engine bonnet. Light on driving mirror switched on by opening driver's door. Ignition and signal light switch with key. Main switch for outside lights. Twin electric screen wiper with automatic parking of arms.

Radio: optional at extra charge.



Differences between the "family 1100" and "1100 TV" as compared with the standard model.

"family 1100"

Wheels with 5.60-14 tyres. Spare wheel carried behind rear seat against left side of body.

Body. Five doors: 4 side and one single-leaf at rear - 3 lights each side - Rear seat with fold-down backrest forming luggage platform - Seats upholstered in imitation leather - Front compartment floor covered with patterned rubber, central part in moquette and rear compartment covered with ribbed rubber matting.

"1100 TV"

Engine. Compression ratio 7.6. Power, 50 h.p. at 5400 r.p.m. Bearings lined with copper-lead alloy with indium. Double choke Weber carburettor.

Transmission shaft in two portions with central support, cardan joints and flexible rubber coupling.

Body. Radiator grille chromium plated, with built-in fog lamp - Outside mouldings and trimmings in chromium plated metal - Large, curved rear window - Projecting rear wings - Inside and outside hardware chromium plated - Bench seat in front or two separate seats with fold-down and adjustable backrests - Upholstery in cloth and imitation leather with various trimmings - Front compartment carpeted in moquette with rubber footrests - Duo-tone finish - Steering wheel and instrument rims coloured to match interior of car - White wall tyres.